



Mentoring Session: Open Data for the Social and Solidarity Economy

DO Impact Project

Barcelona Online Transactional Workshop: Open Data for Social Impact

28 May 2025

AGENDA



Open Data for SSE



Open Data Sources

- International
- National
- Local




From Data to Impact



Conclusions

A person is sitting at a desk, writing on a small notepad with a black pen. The notepad has some handwritten text, including "App about", "to research", "history", and "history". A laptop is visible in the background, partially obscured by the person's arm. The entire image has a blue tint.

Open Data for Social and Solidarity Economy

- sources.
- 

OPEN DATA FOR SSE

Empowering SSE Organisations

- **Better decision-making** using social, economic, and demographic patterns
- Efficient **resource allocation**
e.g. job placement services
- **Demonstrating impact**
Use data to measure project outcomes
- **Transparency and accountability**
Improve reporting and trust
- **Cross-sector collaboration**
Share and reuse data for greater impact



EUROPEAN USE CASES

Open Data Manchester (UK)

- Data for Communities (<https://www.opendatamanchester.org.uk/projects/>)
- Work with local communities.
Collect and use open data for social problems.

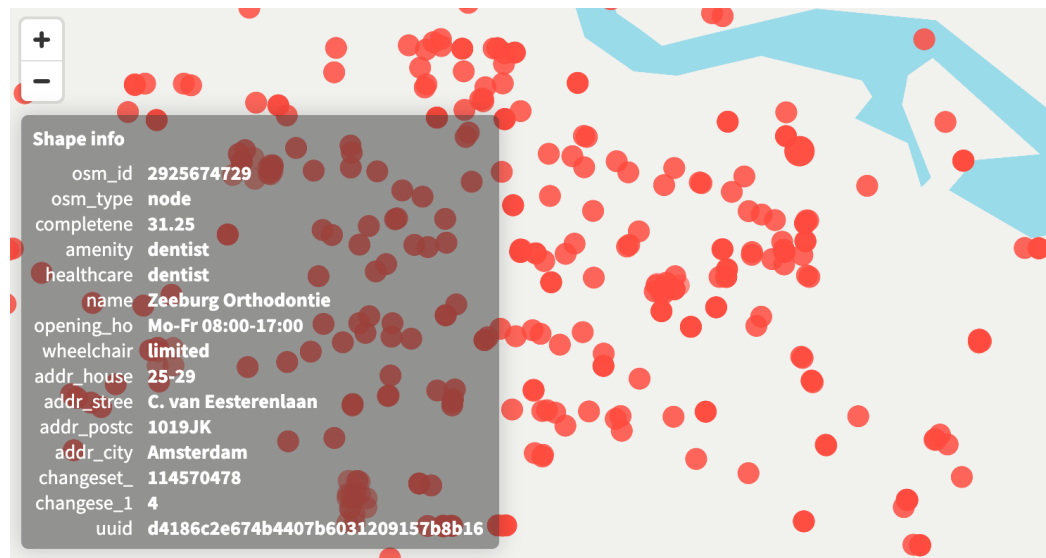
e.g. *School Streets*: mobility and air quality data.
- Impact:
 - Improved child health and road safety in school environments
 - Promotion of informed civic participation



EUROPEAN USE CASES

Healthsites (Netherlands)

- *Healthsites* and Open health data (<https://data.humdata.org/dataset/netherlands-healthsites>)
- Collaborative platform providing open data on healthcare facilities.
It includes information such as location, name, type of facility and services offered.
- Impact:
 - Facilitates public health intervention planning
 - Allows equitable access to medical services (especially in rural or underserved areas).

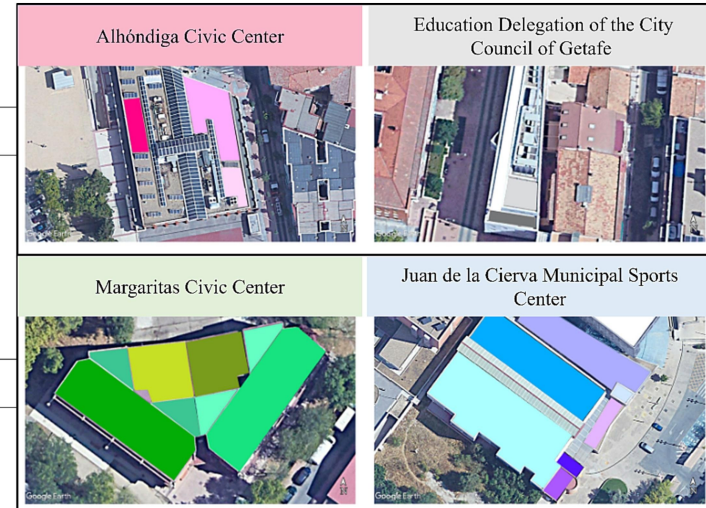


EUROPEAN USE CASES

Community Energy (Spain - Getafe)

- Community Energy for addressing Energy Poverty (<https://www.sciencedirect.com/science/article/pii/S0378778823006485>)
- Case study in Getafe (Madrid) analysing how local energy communities can address energy poverty by combining citizen participation with the use of data on energy consumption, income, and housing.
- Impact:
 - Accurate identification of vulnerable households
 - Cost savings
 - Improved energy efficiency
 - Proposals for municipal policies.

LA ALHÓNDIGA



LAS MARGARITAS

The background image shows a person from the chest down, wearing a dark suit jacket over a light-colored, vertically striped shirt. They are holding a tablet computer with both hands. The image is overlaid with a semi-transparent blue filter. A pattern of white-outlined hexagons is scattered across the right side of the image. A thin orange horizontal line starts with a small orange circle on the left and extends across the middle of the image, passing behind the text.

Open Data Sources

SOURCES AND TYPES OF OPEN DATA

International / European

Eurostat

Harmonised statistics on:

- Population
- Economy
- Employment
- Inequality
- Environment
- ...

<https://ec.europa.eu/eurostat>

Open Data Portal of the European Union

Data from EU institutions and agencies. Diverse topics:

- Economy & Finance
- Population & Society
- Environment & Energy
- Transport & Mobility
- Science, Technology & Innovation

<https://data.europa.eu>

Humanitarian Data Exchange (HDX)

Global open data platform on vulnerabilities and access to services

- Displacement
- Health
- Food security
- Crises

<https://data.humdata.org>

SOURCES AND TYPES OF OPEN DATA

Comparing International / European sources

	Eurostat	EU Open Data Portal	HDX
Main Focus	Harmonised official statistics	Institutional and technical data from EU bodies	Crisis response and humanitarian contexts
Geographical Scope	European Union	EU + some global	Global (focus on crises)
Types of Data	Socioeconomic, demographic, labour, environment	Administrative, thematic, sectoral	Vulnerability, displacement, access to services
Recommended Use	Comparative analysis, policymaking, academic studies	Digital tools, transparency, data-driven applications	Humanitarian planning, development, global analysis

SOURCES AND TYPES OF OPEN DATA

National (Spain)

INE (National Statistics Institute)

Main source of info!

- Population register (Padrón)
- Surveys (ECV, EPF, EPA)
- Census
- Consumer Price Index
- Population and household structures

<https://www.ine.es>

Spanish Government Open Data Portal

Spain's central hub for open data.

- Employment
- Public Services
- Education
- Health

<https://datos.gob.es>

Specific ministries / agencies

- MITECO
Environment, energy, and demographics
- MIVAU
Housing and urban development
- SEPE
Employment and benefits.

SOURCES AND TYPES OF OPEN DATA

Regional and Local (Catalonia and cities)

Idescat (Statistical Institute of Catalonia)

Detailed Catalan statics; finer geographic disaggregation.

- Population
- Housing
- Education
- Income
- Labour market

<https://www.idescat.cat>

Government of Catalonia Open Data Portal

Territorial, social, economic and administrative datasets on:

- Demographics
- Public expenditure
- Mobility
- Environment

<https://dadesobertes.gencat.cat>

Municipal Open Data Portals

Provide Neighbourhood-level data. Examples: Barcelona and Girona.

Open Data BCN
<https://opendata-ajuntament.barcelona.cat>

Girona Open Data
<https://www.girona.cat/opendata>

TYPES OF USEFUL DATA FOR SSE



Demographic

Population, age, migration, housing, mobility



Socioeconomic

Income, expenses, education, unemployment, vulnerability



Health and Social

Access to services, dependency, mental health, disability



Environmental and Urban

Air quality, green space, noise, energy efficiency



Public Service Use

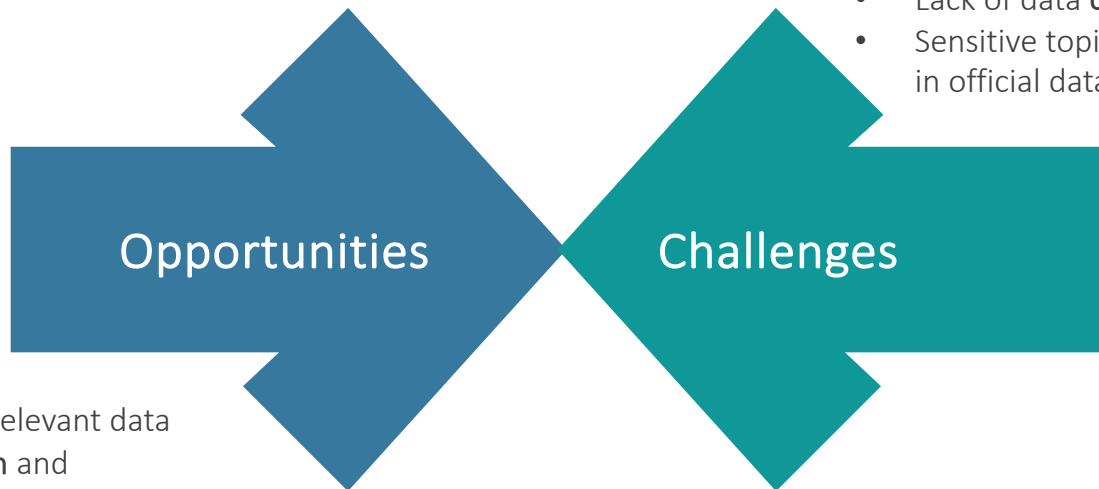
Transport, schools, recycling



Policy Indicators

Budgets, grants, monitoring frameworks

OPPORTUNITIES AND CHALLENGES



- **Free** access to relevant data
- **Standardisation** and interoperability
- Combine with **internal** data (e.g. CRM, surveys)

- Limited **geographic** detail (often only provincial)
- **Technical** complexity for smaller entities
- Lack of data **culture** in many organisations
- Sensitive topics for SSE **underrepresented** in official data

EXAMPLE OF INTEGRATION AND ADDED VALUE

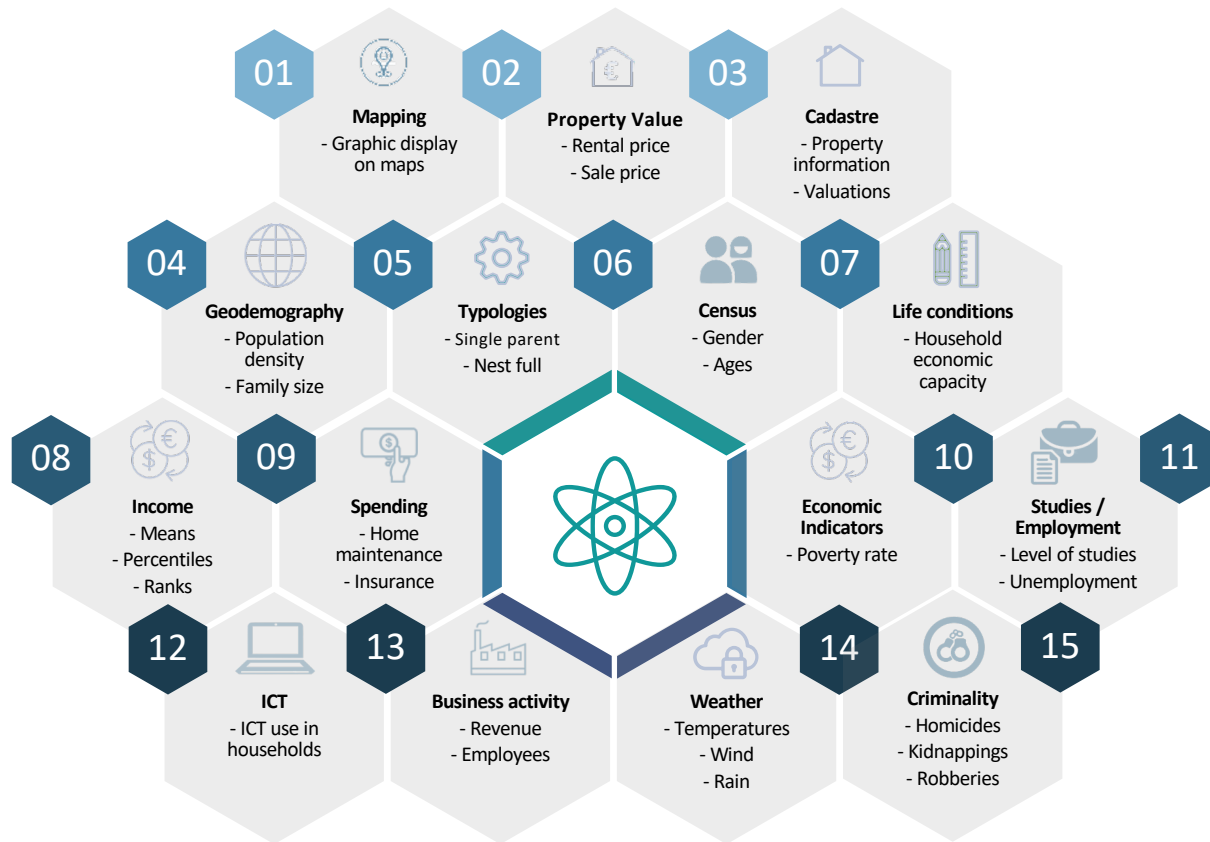
Habits®



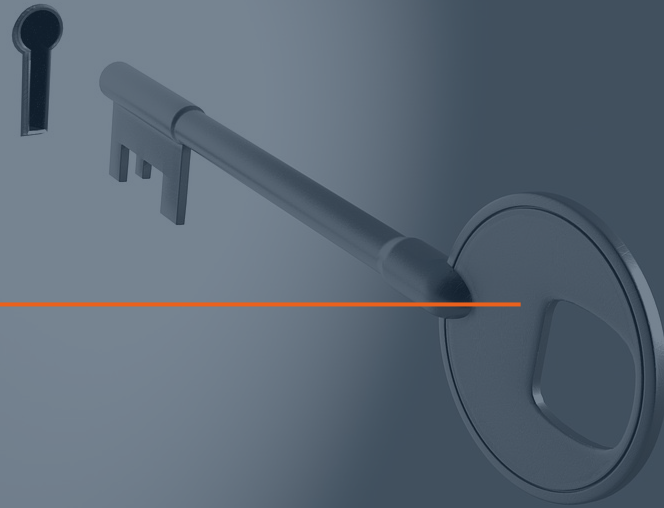
Sede Electrónica
del Catastro

SERVICIO PÚBLICO
DE EMPLEO ESTATAL

SEPE



From Data to Impact



HOW CAN SSE ORGANISATIONS MAKE USE OF OPEN DATA?





CAN WE INTERVENE IN DATA?

Yes!

SSE actors can (and should) influence the data ecosystem:

- **Production**
Collect data (surveys, citizen input)
- **Validation**
Validate data accuracy against local knowledge
- **Publication**
Publish own data (openly and responsibly)
- **Advocacy**
Push for improvements (granularity, frequency, new variables)
- **Participation**
Join open data governance processes

WHAT'S STILL MISSING?

- **Technical capacity within organisations**
Training and support
- **Shared infrastructure**
Datasets, dashboards, geo-tools (GIS)
- **Sector-wide coordination**
Data observatories, alliances
- **Dialogue with public authorities**
e.g. through projects like BCN Open Data + SSE



CONCLUSIONS



CONCLUSIONS

Open Data for the Social and Solidarity Economy

- Open data is a **strategic asset for SSE**: accessible, reusable, and powerful when contextualised.
- Supports **informed decision-making**, social impact measurement, and targeted action.
- **Combining open and internal data** unlocks deeper insights and stronger evidence.
- **Opportunities** abound, but **technical barriers** and limited granularity remain real challenges.
- **SSE organisations can be data actors** – not just users, but also producers, validators, and advocates.
- **Collaboration is key**: shared tools, sector-wide alliances, and public-community dialogue.
- **Investing in capacity and infrastructure** will ensure open data drives meaningful change.

Open data is more than a tool. SSE organisations can not only use it – they can help transform how it's generated, shared and applied for social good.

ais-int.com
pfstech.com



Intelligent decisions

german.sanchez@pfstech.com

Organisation committed to the

SUSTAINABLE
DEVELOPMENT **GOALS**

